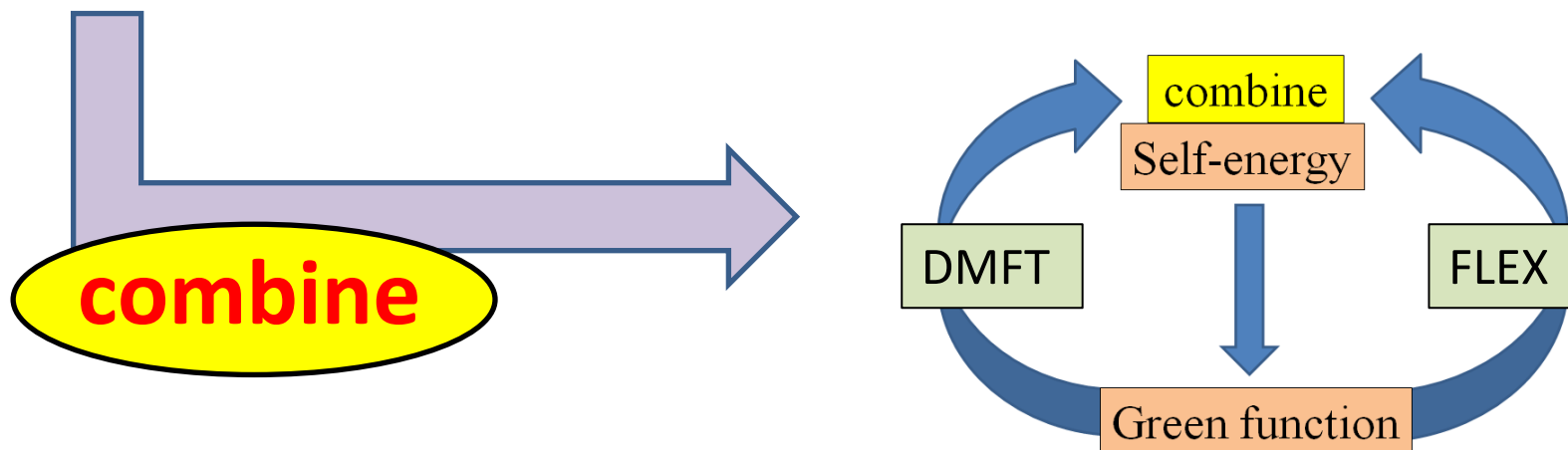


# PS-D1 DMFT+FLEX approach for the phase diagram of d-wave superconductors

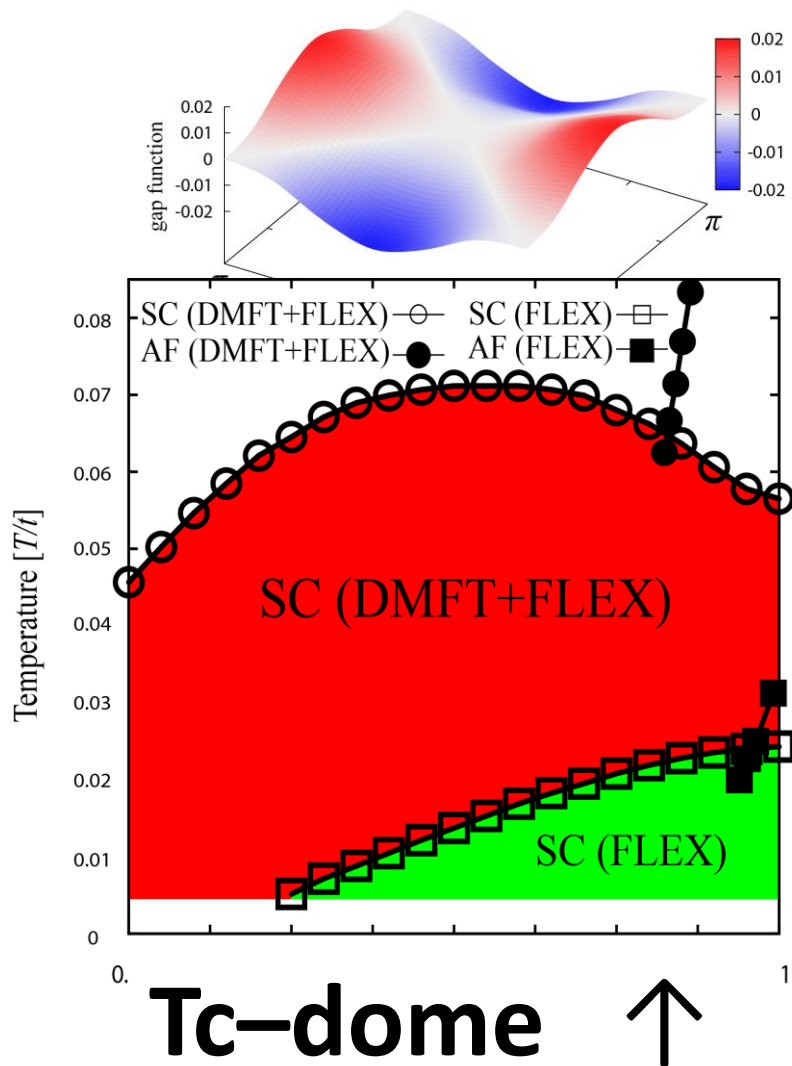
M. Kitatani, N. Tsuji, and H. Aoki

- **FLEX** ... momentum-dependent pairing interaction
- **DMFT** ... Mott physics

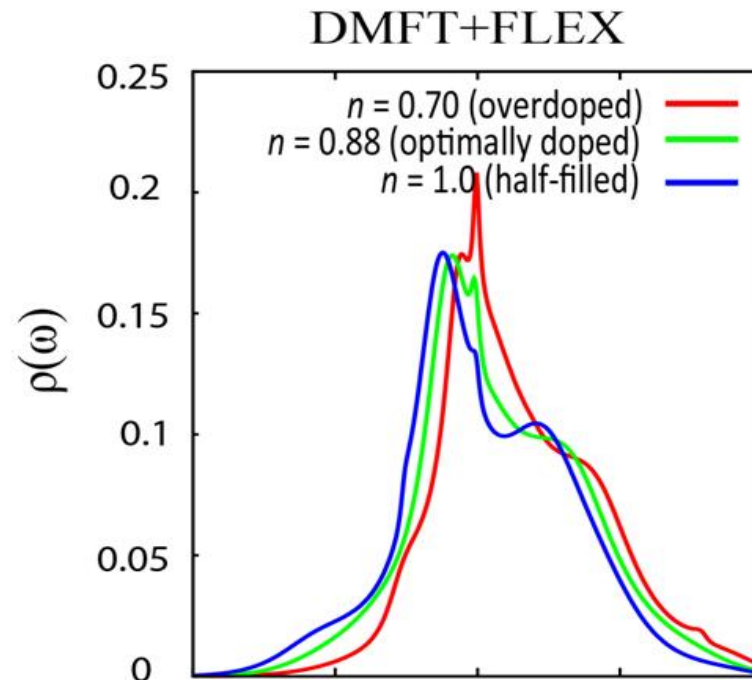
Both are important for studying the **cuprates**



# Results



← d-wave gap function



Strong filling ↑  
dependence of DOS