

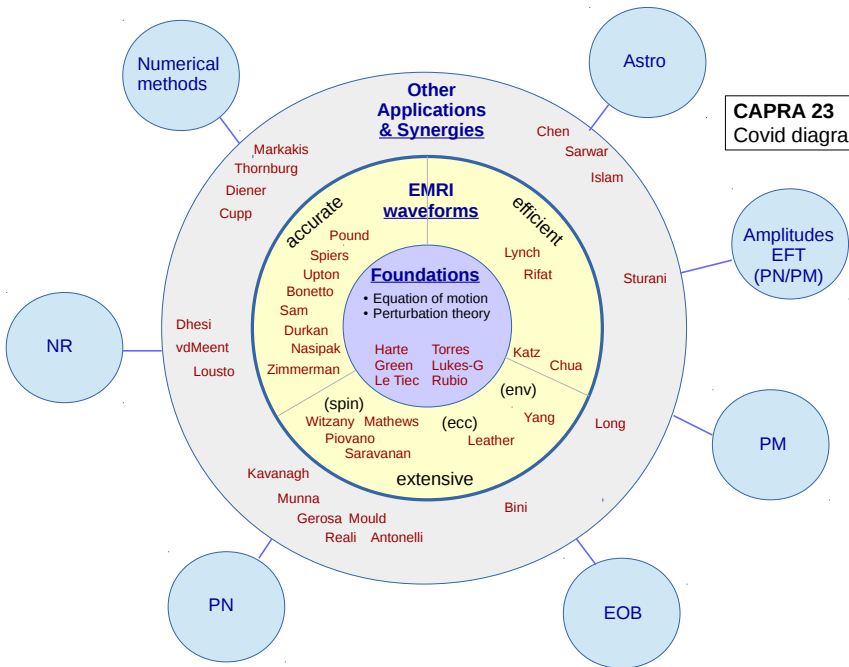
Meeting overview (1h)

- overview
- frontiers
- impression
- remote Capra: how did that work?
- thanx
- next Capra?

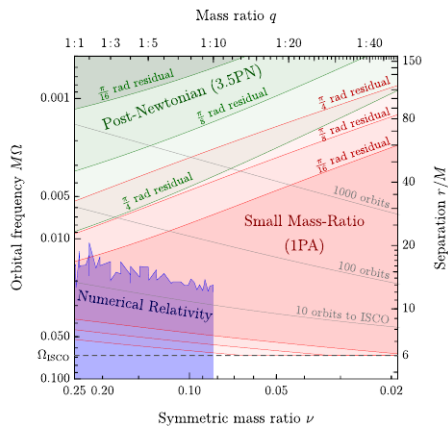
Capra and LISA (1h)

- LISA status update
- LISA Consortium
- How can we/you contribute?

CAPRA 23
Covid diagram



- 2nd-order calculations
- Adiabatic EMRI model: “accurate, efficient, extensive”
- Secondary spin and environmental effects
- Scattering and PM/PN
- “IMR with SMR”
- Resonances (orbital, spin, 3rd-body)



van de Meent & Pfeiffer (2020)

Observations

- Longevity of Capra enterprise
- Vitality of Capra enterprise. New applications, fresh ideas, great research. Feeling that best is yet to come
- No bad talks!
- Scope increasingly broad, forum more “multicultural”—but core focus maintained and drives activity
- LIGO!
- Need to do better on diversity and inclusiveness. Suggestions: Need a diversity committee, code of conduct. Be more proactive in soliciting participation from minority groups. Simple gestures (e.g., share gender pronouns) help a lot. Have a “best student presentation” award?

Remote Capra: how did that work?

- **Obvious advantages** (besides reduced environmental impact): Easier to participate, attracting larger audience. Less time wasted in travel.
- **Obvious disadvantages**: More distraction at home, harder to concentrate. Time-zone issue leads to shorter days & shorter talks.
- Live YouTube streaming & recorded talks extremely useful. Should make that a feature of future meetings, whether virtual or physical.
- In future physical meetings should consider a blended approach, where remote participation is facilitated/encouraged.
- End-of-day discussion sessions work better than whole-day discussions.
- Organizers commended for maintaining “Capra spirit” despite virtual format.
- Networking is important part of Capra, but hard (specially for new participants) in virtual format.
- Some found Slack discussions useful, but participation was low.
- Useful to have an archive of pdf/ppt presentation on meeting website.

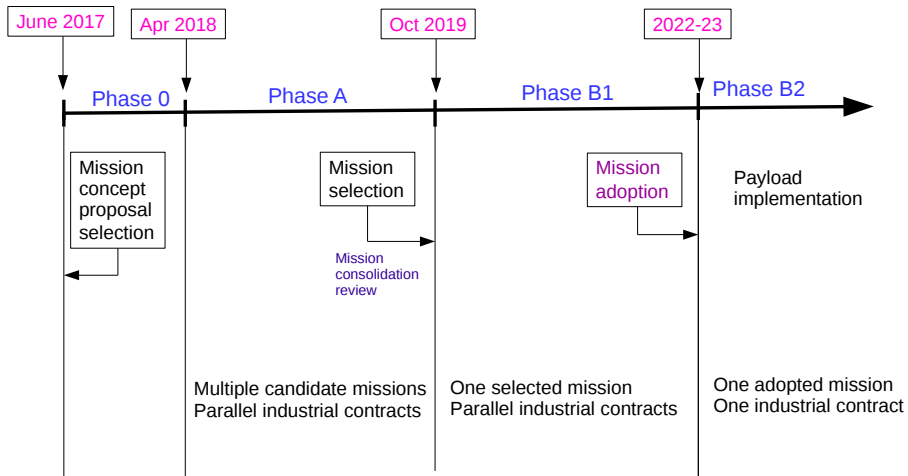
Thanks

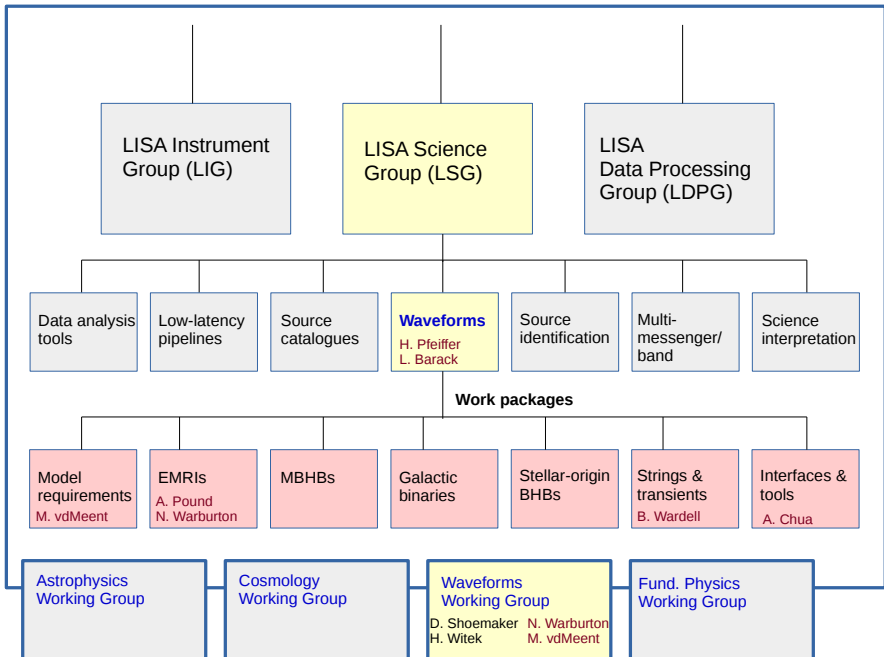


NEXT CAPRA?

- Perimeter Institute/Guelph? (Yang)
- Manila? (Vega)

LISA review flow





How we/you can contribute

- Become Consortium member
- Sign up for WavWG and Work packages
- WavWG white paper
- Mission studies (recently: low-freq characteristics, mission duration, data gaps,...)